

GRANGE

BIG LOCAL



Annual Report 2017-18

Contents

The Big Local Outcomes/ Key Achievements	4
Activities Over the Last Year	5-13
Social Media Stats	14
Board Members	16
CommUNITY Barnet	17
Accounts and FAQ	18-19



Foreword

I am pleased to present the second Grange Big Local Annual Report, which is for 2017 to 2018. Another exciting year of getting out to gather information from the 6,000 living within Grange Big Local area who must know by now that we're here – Grange Big Local is about everyone who lives, works and volunteers in the area and what they want to make the area an even better place to live!



We've come to the end of the two-year period of our first plan on how the £1 million of National Lottery money allocated should be spent. I'm pleased too that we have been successful in securing a further two years of funding from our £1 million to turn our local plan from a set of ambitions and aspirations to reality and making things happen on the ground. In doing so, we want to be inclusive and be open to our diverse community.

We hope you find this report interesting. This money belongs to this community. We want you to know how we are spending it and we want to know what you think.

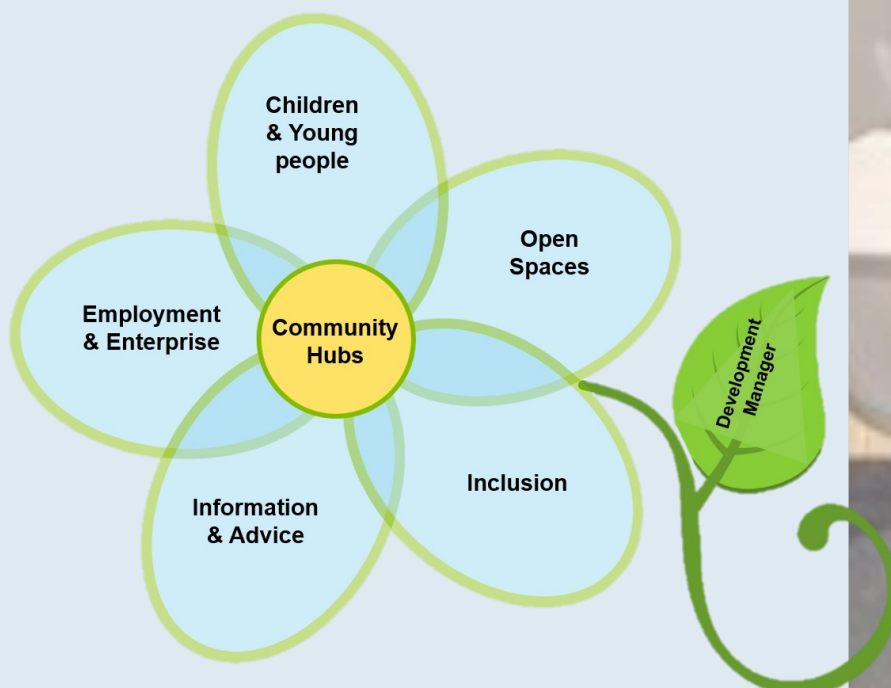
*By Pat Murphy, Chair,
Grange Big Local Partnership Board*

The Big Local outcomes:

- Communities will be better able to identify local needs and take action in response to them.
- People will have increased skills and confidence, so that they continue to identify and respond to needs in the future.
- The community will make a difference to the needs it prioritises.
- People will feel that their area is an even better place to live.

Our key achievements in 2017/18:

This picture shows what we are concentrating on. It's a wide brief developed by multiple consultations and often the areas overlap. Each part of the flower represents a priority area that we work on in task groups.



Our activities over the last year include: Fun Palace

Our festival in 2017 was a Fun Palace, part of a national weekend of action to put culture at the heart of local communities, with the strapline “Everyone an Artist, Everyone a Scientist”. Held at Oak Lane open space and the Ann Owens Centre, up to **600 people** visited and took part. A Fun Palace is a chance for people to share their passions and talents with their neighbours – a value that goes to the heart of what we believe Big Local is about. Fun Palaces are about inspiring people to have a go at something new and central to that philosophy is that activities are free.

The Palace was filled with stalls, activities and exhibitions delivered by a range of local entrepreneurs, charities and partners.

We had live music all afternoon, as well as chances to make music, arts and crafts, science experiments, calligraphy in community languages, circus skills, archaeology, cookery, Thai kick boxing, story-telling, nail-painting, a bouncy castle and opportunities to meet the local Safer Neighbourhood Team, a fire engine and Healthwatch Barnet.

Over **120 volunteers** helped make it happen, which was a fantastic achievement and shows that local people are really behind the work we have been doing.

Our **£2,500 budget** was almost match-funded by additional sponsorship of **£2,100 donated** by local residents, businesses and supporters of Grange Big Local. This has included contributions from Barnet Council and Haven Estate Agents.

- **89%** agreed that “This event makes me feel proud of my community”
- **79%** of participants said that “the event made them want to be more involved in local projects”.

Improving our open spaces – developing a strategy

Local people kept telling us that they wanted to be proud of where they live. The Grange Big Local Partnership Board commissioned Avra Ploumi-Archer of Space and Place Design to help us develop an open spaces strategy. We carried out an extensive consultation using a range of techniques asking people what they wanted for the area. We spoke to more than 100 people of all ages from the area.

- **92%** of the consultation respondents lived in the Grange Big Local area
- **60%** were female
- Almost **40%** were aged between 31-45 years of age
- **13%** had a known disability.

There is not much open space in the Grange Big Local area (**2.95%** as compared to a London average of **14.26%**) and there are less than half of the recommended number of equipped play spaces in the area.

The proposals included:

- Improving playgrounds at Market Place, and development of facilities at the Grange and Thomas More estates
- Increasing the number of litter bins in the area
- Increasing the number of dog waste bins
- Increasing the number of benches in the green space areas.

Following the tree planting at the Oak Lane open space volunteers have decorated the tree at Easter and Christmas times.



Tarling Road Centre

Work is underway on building the new Tarling Road community hub and we understand that it is supposed to be completed by October 2018. It is intended to replace the Old Barn and the Coppetts Road Centre.

Grange Big Local continues to work with Barnet Council, local councillors and other stakeholders to ensure that the community has an asset that works for everyone. We are members of the user group, putting forward our views on how the centre can succeed.

We commissioned Lorraine Hart from Community Land Use to help us work with Barnet Council, local councillors and other members of the user group, including the Somali Bravanese Welfare Association, to make sure that the community's needs are fulfilled in the new centre. We have worked to ensure a fair use of space and affordable hire costs. This has involved a lot of behind-the-scenes work. We spent **£2,500** on this project.



East Finchley Citizens' Advice Service - Providing access to advice

We commissioned Citizens Advice Barnet to organise a weekly local advice service in St Mary's Parish Centre. This includes information and advice on benefits, debt management, housing and consumer rights.

Citizens Advice Barnet Case Study

Case Study 'A' is a disabled elderly woman who gets Disability Living Allowance (DLA), Pension Credit and Housing Benefit. She was invited to transfer from DLA to Personal Independence Payment (PIP), which we successfully helped her to do. She had received a letter from the local authority saying that her Housing Benefit had stopped because her savings were too high. Our adviser challenged this on the basis that her savings should be disregarded because her Pension Credit was subject to an assessed income period. This challenge was successful, with her Housing Benefit being reinstated. We were also able to obtain a full exemption from Council Tax for 'A' on the grounds of severe mental impairment.

Advice for EU nationals

The Grange Big Local is a diverse area and many of the residents are EU nationals who were concerned with their residency status following the 2016 referendum. We partnered with Citizens Advice Barnet who delivered a fact-filled seminar to 18 local residents at Martin Primary School. The feedback from participants was positive and some asked if there would be more events like it.

£34,340

Put into the pockets of local people against a target of £16,000

100%

Of clients came from the N2 area

83%

Of cases were resolved, 6% ongoing

79%

Of clients were disabled or suffering from a long-term health condition, highlighting

60%

Of clients came from the GBL area

105

Clients were seen at this service, against a target of 150

The demographics of those that attended were as follows:

60% of clients were female

40% of clients were male

69% of clients were under 65 years of age

31% of clients were under 55 years of age

Studio N2

We approved a grant of **£39,343** for local charity Art Against Knives to work with children and young people at risk of knife crime and gang violence. We know that this is an issue in the area and we are very keen to support early intervention. Barnet Homes awarded some additional funding which enabled the charity to recruit a Community Outreach officer.

In the first six months of operation, the project received **19 referrals** from statutory agencies concerned about the welfare and safety of local young people. They engaged **29 young people** of which **17%** have gone on to participate in positive activities and we are confident this project will deliver more substantial success. This is one of the largest projects Grange Big Local is funding. Through the partnership with the East Finchley Combat Academy, **25** of the young people are active participants, **16** young women attend the Vales Nails sessions and **24** young people are receiving mentoring and additional support. Three young people on Youth Offending Orders have had their attendance at these activities written into their order.

Of the young people engaged with Art Against Knives:

73%	were at risk of serious youth violence
23%	were in alternative education
21%	were victims of serious youth violence
17%	were gang associated
17%	were involved in the criminal justice system

Grange Big Local successfully brought in **£2,115 of additional funding** from London Sport to develop a satellite club with Art Against Knives and the East Finchley Combat Academy to support young people aged 14-19 to become more active.

Improving safety and accessibility in our neighbourhood Trinity Road Underpass project:

This project has been ongoing for several years and has come up against delays, which is unsurprising given that there are a number of partners involved, including Grange Big Local, Barnet Council and Transport for London. As many will know, there is a dark, concealed and isolated underpass underneath the Northern Line. It is still used as a walkway for hundreds of residents and school children.

We were very pleased to secure **£9,999** from Barnet Council, which we committed to matching from our own funds for the refurbishment. We worked with Rara Cooperative to develop a feasibility study, which informed the successful funding application.

The funds will be used to improve the drainage and install tamper-proof mirrors at the blind corners to let pedestrians see who is approaching. New fencing will also be put on either side of the long approaches subject to permission being granted. We hope that local young people will also become involved in painting a giant mural artwork on the wall of one of the bordering houses to give the underpass a greater sense of being a social space with a cheerful atmosphere by working with a community artist.



Age UK Barnet exercise class and music group

Age UK Barnet approached Grange Big Local for funding to support an exercise class and a music appreciation group.

The music group listened to live performances by the Redbourne Ensemble (a string quartet); Yuri Sabatini, an operatic tenor; and Natalie Monthaktab of the Welsh National Opera.

- 53** People attended regularly
- 45** people have known disability
- 28** People live alone
- 38** attendees are female
- 31** are over 80 years old
- 9%** come from the N2 area
- 37** are described as White British.

The group provides a social opportunity, intellectual stimulation and gives attendees something to talk about with friends, volunteer drivers, family and carers.

Barnet Homes Community Roadshow at Brownsell Road green

We were delighted to support Barnet Homes with their community roadshow in July 2017. Although it rained on the day, **over 100 local residents** attended and we used the opportunity to promote the work of Grange Big Local and to capture their views to inform our open spaces strategy.

St Mary's Parish Centre

We had set aside **£10,000** to re-floor the parish centre, which is used as a community centre, as long as this was match-funded. St. Mary's have decided not to go ahead with this grant, so these funds will be re-entered into our budget.

Great Get Together

Combining tea and cake at the Great Get Together with our Annual General Meeting on a glorious summer's afternoon, we were delighted to welcome **30** local people to hear about our achievements and our future plans and to celebrate the work of Jo Cox.

Partnership support

We recognise that in order to achieve what we want to do, we need support of a worker and we are examining strategic options for future delivery as the programme grows. We also look at opportunities for training and development of partnership members. These include opportunities run by Local Trust and other organisations.

The employment of our worker is a key component of partnership support. We decided to increase the hours of our Partnership Manager from October 2017 We recognise that this is an investment in supporting the resident-led partnership in achieving what it wants to do.

What next?

Grange Big local is always looking to involve more people and encourage more volunteers to come forward. We want to reflect the community we come from. Grange Big Local's commitment to equality and promotion of diversity are central to our values. We seek to overcome all forms of discrimination so that everyone can participate in, contribute to and benefit on an equal basis.

Follow us on social media



@GrangeBL



@grangebiglocal



@grangebiglocal

Sign up for our newsletters
on our website

Contact us

020 8364 8400

info@grangebiglocal.org

www.grangebiglocal.org

Text GRANGE to 66777

GRANGE
BIG LOCAL

3,000

Leaflets distributed

700

Twitter followers

400

Instagram followers

300

Newsletter subscribers

200

Facebook followers

2017 / 2018 Grange Big Local Partnership Board Members

Our partnership board members were:

Name	Status (resident/ volunteer etc.)	More Information
Pat Murphy	Resident	Chair
Dinah Beamish	Resident	Secretary
Yair Shifman	Resident	Treasurer; stood down May 2018
Sandy Barker	Resident	Board member
Spencer Birsinger	Resident	Board member
Maria Petnga-Wallace	Resident	Board member
Leo Smith	Resident	Task group chair
Dipak Jashapara	Resident	Stood down, March 2018
Mario Demetriou	Resident	Stood down, July 2017
James Watson	Resident	Task group chair
Elizabeth James	Resident	Board member
Julia Hines	Volunteer	Task group chair
Eric Albani	Volunteer	Board member
Emily Burnham	Volunteer	Board member
Councillor Alison Moore	Non-voting member	Board member

Grange Big Local would like to thank the following funders and local organisations for their support:



Our Locally Trusted Organisation - CommUNITY Barnet

CommUNITY Barnet has continued to play a crucial role in supporting Grange Big Local as its Locally Trusted Organisation.

CommUNITY Barnet are the umbrella organisation for the local voluntary and community sector in Barnet, supporting and representing voluntary and community groups, charities and faith groups across the borough.

CommUNITY Barnet's mission is to help ensure Barnet has a thriving, sustainable and vibrant third sector.

Grange Big Local is grateful for the support of CommUNITY Barnet's Chief Executive, Julie Pal, who has worked with Grange Big Local community partnership manager Jon Woolfson, to support the Grange Big Local partnership board in its Plan delivery.



@CommUNITYBarnet



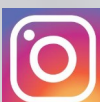
020 8364 8400



@CommUNITYBarnet



info@communitybarnet.org.uk



@communitybarnet



www.communitybarnet.org.uk



Accounts frequently asked questions

Why is there more income than spend?

We didn't spend as much as we thought we would because some things took longer to get off the ground than we expected. Grange Big Local is volunteer-led and although this brings value in terms of volunteer hours it also means that there are capacity limits. In terms of specifics, the new community hub has been delayed as has the underpass project. Playgrounds will take some time to get off the ground because there is a lot of planning involved and people to consult with.

How much has been spent this year?

In the year to March 2018, Grange Big Local spent more than a tenth of the grant.

What money has Grange Big Local drawn in?

Grange Big Local has brought in almost £3,000 in the past year, including area committee funding and a London Sport grant for a satellite club.

What has been the big spend?

We invest in having a paid worker to support volunteers. We have also invested significantly in the Studio N2 programme managed by Art Against Knives.

Why are there two Big Lottery grant entries?

The March 2018 grant is for the next plan from April 2018. We've left it in because it was received before the end of the financial year.

Is there any money for Grange Big Local to consider its legacy?

Local Trust announced in 2017 additional funding for the 150 areas taking part in the Big Local programme. Big Local areas will each be receiving an extra £105,000 on top of the £1 million already committed to support make their communities even better places to live to address the legacy. This means what remains when the Big Local £1 million is spent.

Accounts

The table below gives a breakdown of Grange Big Local income and expenditure, managed through CommUNITY Barnet, in the year to the end of March 2018.

2017-18 balance brought forward	95,749.81
--	------------------

Grants

Big Lottery - October 2017	80,325.00
----------------------------	-----------

Big Lottery - March 2018	144,900.00
--------------------------	------------

Total	225,225.00
--------------	-------------------

Other income

Area committee funding (for festival)	1,500.00
---------------------------------------	----------

Donations, stalls and refunds (for festival)	801.26
--	--------

London Sport (for satellite club)	528.75
-----------------------------------	--------

Haven Estate Agent (for festival)	100.00
-----------------------------------	--------

Total	2,930.01
--------------	-----------------

Total Income (Grants and other income plus total income brought forward)	323,904.82
---	-------------------

2017-18 total expenditure

Partnership support	32,420.31
---------------------	-----------

Community hubs	6,334.21
----------------	----------

Children and young people	36,496.00
---------------------------	-----------

Enterprise and employment	12,000.00
---------------------------	-----------

Open spaces and environment	4,795.84
-----------------------------	----------

Inclusion	5,950.00
-----------	----------

Information and advice	10,709.00
------------------------	-----------

Total expenditure	108,705.36
--------------------------	-------------------

Net income (deficit)	215,199.46
-----------------------------	-------------------

Contribution to Community Barnet	(1,150.00)
----------------------------------	------------

Balance	214,049.46
----------------	-------------------

GRANGE

BIG LOCAL



@GrangeBL



@grangebiglocal



@grangebiglocal

www.grangebiglocal.org



NATIONAL
LOTTERY FUNDED



CommUNITY Barnet
supporting community organisations

Local Trust | Big Local